

Casappagives machines
power

Page 2

Walvoilrevamps
control valves

Page 2

Tips & tricksChanging the direction
of gear pumps

Page 3

Electric control valveson base plate with security
device

Page 4

Kramp becomes official Comatrol distributor



Comatrol has appointed Kramp as an official distributor of its products in the Netherlands, Germany, Belgium and France. As an official distributor, Kramp has access to the entire range of Comatrol in-line components and cartridges, which means we now have even more to offer our customers.

"Comatrol has more than 480 different valves and Hydraulic Integrated Circuits (HIC) on the market", says Kramp Group Hydraulics Product Manager Albert Wolbrink. "We supply the entire range and, thanks to intensive co-operation with the manufacturer, our engineers can also quickly design and assemble a custom-built manifold (cartridge block)". Comatrol is part of the Sauer-Danfoss Group and collaborates closely with customers and suppliers worldwide. A market leader in HIC design, Comatrol proved itself chiefly through its swift production of prototypes.

The company's range of cartridge blocks comprises a wide variety of solenoid, proportional, mechanical and Cetop valves.



Compact Casappa piston pumps

For anyone looking for compact hydraulic pumps, Casappa has just unveiled its latest winner: the MVP range. The compact design of these axial piston pumps with variable output for open systems makes them an excellent choice for mobile applications and modern hydraulic installations. Besides their compact design, the pumps also have high flow and pressure and are available with various controls.

Technical information:

- Displacement: 28 to 84 cc per revolution
- Operating pressure: 280 bar continuous (peak pressure up to 350 bar)
- Rpm: up to 3000 rpm.
- Controls: pressure controller, load sensing, power control valve and various electronic controls (CAN bus option)
- Linking: in combination with a Kappa series gear pump



KRAMP VARSSEVELD

Certified service dealer for Black Bruin

With its Black Bruin brand, the Finnish company Sampo Hydraulics stands out as a leading manufacturer of radial piston motors. The company's co-operation with Kramp has now been extended even further.



Kramp, already a long term sales partner for Black Bruin in the Netherlands, Germany and Belgium, has now also taken on the role of certified service dealer. Customers from Central and Western Europe can have their motors repaired and maintained by highly trained technicians at Kramp in Varsseveld. Furthermore, Kramp's well organised logistics network guarantees that transport of the motors from the customer to Kramp and back again proceeds smoothly.

SUPPLIER PORTRAIT

Casappa gives machines power



For almost 60 years Casappa has been producing gear pumps and gear motors for various applications, but with an emphasis on agricultural and earth-moving machines. Thanks to their extensive experience in these sectors, Casappa has become one of the most popular brands.

The size of the Casappa factory near the Italian town of Parma is 21,000 m² and the factory has a production capacity of more than 800,000 units per year. Applications are very diverse where Casappa products are used, for instance, on combine harvesters, balers, lawn mowers, telescopic handlers, diggers and skid steer loaders.

Casappa focuses on quality. Each pump manufactured is tested and run in, and the R&D department is large. There are various test stands on which pumps and motors are continually

subjected to rigorous testing, and there is even a soundproof room for testing the sound level of the pumps. All of this is necessary when you supply highly regarded, well known machine manufacturers like Agco, CNH, Manitou, Merlo, Terex, Caterpillar and many others. Kramp has been distributing Casappa pumps and motors for years and has built up a good co-operative relationship with this manufacturer. For you as a customer, this means that almost any pump or motor can be delivered quickly.



Kramp UK – Official Sauer-Danfoss partner for after sales



A perfect combination: Sauer-Danfoss knowledge and Kramp distribution

Sauer-Danfoss is one of the world's largest manufacturers and suppliers of mobile hydraulics and electro-hydraulics with global sales in the region of \$ 1.6 billion. With a product range including Orbital Motors, PVG Proportional Control Valves, Steering Components, Hydrostatic Transmissions & Mobile Electronics the majority of Hydraulic needs are catered for.

Building on the successful relationship between Sauer-Danfoss and Kramp in the Dutch market Kramp UK established a direct partnership with Sauer-Danfoss in 2010. Kramp's logistical performances and experience in the agricultural market contributed to this development.

The relationship between Kramp and Sauer-Danfoss has created opportunities on a European level. Our strong distribution network and added value coupled with specialist knowledge enables us to deliver and meet the high standards Sauer-Danfoss and the market expects.



Walvoil revamps control valves



Walvoil's range of SDS180 control valves is now complete. The SDS180 is the successor of the SD16, which is gradually being phased out. The new range improves performance and reliability while components such as pistons and stoppers remain exactly the same and fully interchangeable with the SD16.

TIPS & TRICKS

Changing the direction of gear pumps

Situations can arise when you need to reverse the rotation of your Casappa gear pump, for instance from right to left. The experts at Kramp can, of course, do this for you, but it is a task that you can take care of yourself.

1. Make sure your working environment is clean, because most problems with hydraulics are a result of contamination. Put the pump in the vice; a vice with aluminium jaws is preferable. Our specialists always keep the drive side on the right-hand side.



2. First remove the shaft, then take off the protection cap, nut, offset washer and key in that order.

3. Remove the back cover and take care with the pins: Do not lose them.

4. Remove the pump housing. Take note of the original position (see arrow).



5. Remove the uppermost bush and take good note of the original position.

6. Disassemble the drive shaft and driven shaft.

7. Rotate the lowermost bush on the pump front cover side 180° horizontally, and take care that the washer and support ring remain securely in position in the recess.



8. Carefully put both of the shafts back; take care that the seal is not damaged.

9. Rotate the uppermost bush on the back cover side 180° horizontally and put the component back; take care that the support ring of the bush is sitting correctly in the recess.



10. Turn the pump housing 180° vertically and fit it.

11. Place the pins and fit the cover.



12. Install the bolts and tighten them to 45 Nm (aluminium cover) or 70 Nm (cast iron).



13. Fit the key and check whether the installation has been carried out correctly by turning the shaft (it will be a bit heavy to turn) with pliers or coupling half; if that does not work, it is likely that one of the support rings is not seated properly in the bushes.

14. At Kramp we always replace the D in the pump housing with an S; that shows that the original rotation to the right (destra) has been changed to the left (sinistra). This prevents an incorrect pump being installed when any replacement work is done in the future.



PRODUCT



Control valves with electric control

Walvoil and Saturn control valves have a broad range of applications, in particular mobile ones. While these control valves in the past were mainly operated manually (directly with a lever or with remote cables), they are now increasingly fitted with electric control. With this option, a double "push-pull" magnet is mounted on the spring cap side of the control valve. This electrical option bridges the gap between purely manually operated and fully proportionally operated control valves.

Manually operated control valves from both Walvoil and Saturn can be converted to electrical operation.



Control valves to order

Control valves, in both mono block and section construction design, are available in the Kramp webshop. These control valves are in stock and ready for you, in a large number of standard configurations in various sizes. However, there are even more options when adapting a control valve to your requirements, using different types of piston, operation, levers, security devices and more. For these modifications and for assembling section construction control valves, Kramp has a perfectly equipped assembly workshop. Together with the extensive range of parts we have in stock, this means you can quickly obtain the custom-built control valve you require.

ONLINE

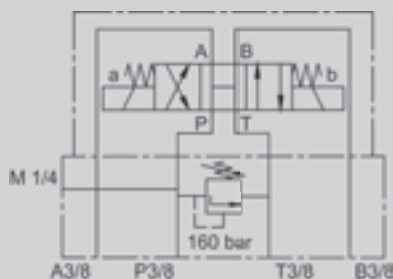
SATURN



Electrical control valves on base plate with security device

Alongside a complete range of Saturn Cetop electrical control valves, Kramp also stocks a number of Cetop control valves premounted as standard on a base plate.

The base plate has a direct control damped security device that can be set between 110 and 220 bar. The security device is set as standard to 160 bar.



Saturn electric control valves with base plate, with part numbers that start with SKLS031C..., come in 12 and 24 volt models and can be supplied with a closed middle position (A and B closed, P and T connected) or a fully open middle position (A, B, P and T connected).

TIPS & TRICKS 2

Problems with PVG valves during operation? Cleaning can help

Hydraulic problems that occur during operation, such as pistons stuck in Sauer-Danfoss PVG valves, are often the result of polluted oil. More than 80% of all breakdowns are the result of polluted oil. This is why we always recommend using pressure filters with PVG valves. Cleaning can also enable you to continue operating the machinery when a fault has occurred. Perform the following steps:



1. Make sure your environment is clean.
2. Remove the manual control by unscrewing the four bolts.



3. Remove the piston and clean it carefully; check for score marks and any damage. If you find score marks or damage, replace the piston.



4. Check the filter sieve in the solenoid valve and if necessary, clean it.
5. Check if there are any O-rings, and reassemble all components in reverse order.
6. Check for leakage.



PVG valves can be supplied quickly and fully assembled

Kramp is the right partner for the assembly, testing and tuning of Sauer-Danfoss PVG valves.

Kramp has been a stock holding dealer for manufacturer Sauer-Danfoss for years. Kramp not only supplies the required Sauer-Danfoss product, but we also add vital value to the process. Kramp assembles PVG valves and before sending

them, carefully tunes them and tests for proper sealing, according to the requirements of the customer. This is done in our assembly department in Varsseveld (the Netherlands). In this fully equipped workshop, with a modern test bench and all the necessary tools and materials, we are able to assemble PVG valves in line with your specifications within an extremely short delivery time.



About us

Stratton Business Park • London Road • Biggleswade • Bedfordshire • SG18 8QB
 expert.uk@kramp.com • www.kramp.com